



Kammanahalli Main Road, Off Bannerghatta Road
Bangalore 111 222



Aspen
woods

L I V E W I T H N A T U R E

Luxurious 2 & 3 BHK Flats with Modern Amenities

Back to the roots... literally!



INNOVATIVE INFRA PROJECTS

The builders are Civil Engineers, having 20 years of experience in the construction industry, with the twin objectives of

“QUALITY CONSTRUCTION”

“MORE VALUE FOR MONEY”

with this vision, and strategic planning, we deliver what we promise, quality in every detail of work, at each level and with continuous innovation, are what sets us apart from, rest of the builders in the country, in future.

Aspen woods

LIVE WITH NATURE

The name says it all


As light as balsa, as strong as teak, as aesthetic as rosewood, aspen has been the chosen construction material from times immemorial. Drawing inspiration from this gift of nature, we have launched “Innovative Aspen Woods”, one of our most prestigious projects. Living here is like going back to the roots, literally.



You would be staying here

Bangalore, the happening global city, is the nerve-centre for technological development, especially, the IT sector. Hardly is there an IT major that does not have a presence in Bangalore. And, Bannerghatta Road is one stretch that is dotted with corporates (including the IT industry), ultra-modern hospitals, international schools, star hotels, and heritage spots like the Meenakshi Temple. Utilities like hospitals, malls, etc. are all hop-skip-jumpaway.

In spite of its commercialized nature, Bannerghatta Road still offers a dwelling-like serenity with appreciable green-cover, national park nearby and thick growth of protected forest, and fairly well-scattered farm houses. The interiors off the Bannerghatta Road offer you the double advantage of urban comforts and countryside peace. Bannerghatta Road, one of the major arterial roads, is already under the modernization plans. The road is in the process of being widened and remodelled to match international standards. A property in a location like this, in a short time, would surely become worthy of being possessed, cherished and lived in. Such an opportunity is just a discretionary decision away.



Live life as
you always
wanted to

A landmark of elegance

If location comes as a pleasant surprise to you, our apartments shall, surely, impress you. The majesty of its looks, what with the skylines in the background changing from early-morning orange to deep blue at noon to mellowed maroon by evening to star-studded dark tinge at night, gives its owner a sense of pride in flashing his visiting card.

Structural design, the layout pattern and colour scheme, collectively, put the apartments many notches above the ordinary when it comes to comfort, safety and aesthetics.

Adequate open spaces, manicured landscapes, spread-out greenery, all symbolizing merging with nature and existing along with the state-of-the-art residential facilities make your life worth every moment of the day. Now you can believe your lifestyle is nothing less than royal.



These are what amenities should be

Care for a professional dive or long for a fun-splash. Just wade through the water. You have the ultra-modern swimming pool with clean and clear water. After that refreshing swim, head to the showers or the steam room. What an experience!

Not in the mood for any strenuous outdoor activity? Come to the indoor stadium. Go for a bout of table tennis, challenge your friend to a game of chess, do what you like under the heat- and dust-proof dome.

Feel like connecting with the god-head? Our meditation room would mesmerize you with its silent ambience with selective rendering of soothing hymns.

Go back in the memory lane. Reminisce about your past. Share the events of the good old days. Yes, we have the senior citizens' kiosk.

Children are buoyant by nature. Who can stop them from being restless? Our children's play area is the stuff of every child's dream. Swings.

Are you a health freak? Sweat it out in the health club that provides the most-modern gym-facilities.

After a hard day's job, you surely need to relax. Play rummy. Win a game in carom. Gossip and joke. Make your day complete at the clubhouse.

A promenade for a leisurely walk, a jogging track for the running enthusiast, a landscaped garden for the nature lover, and many other facilities like the basket ball net, multi-purpose hall, all put you in to the comfort zone of cozy living.....for life.



Amenities

- Jogging Track
- Swimming Pool
- Gymnasium
- Children's Play Area
- Steam room
- Mediation/Yoga Room
- Indoor Games
- Badminton Court
- Multi Purpose Hall
- Juccuji
- Table Tennis
- Basket Ball Hook
- Landscaped Garden

Services

- Rainwater Harvesting System
- Sewage Treatment Plant
- Water Softener
- Power back-up of 1 kW
- Intercom

Beautiful people need to exercise too.
And our ultra-modern Gym is the
perfect place to workout



Specifications

- Structure

: Basement + Ground + 8 Upper Floor

: RCC framed structure with concrete block masonry walls

: Covered car park in the basement & ground
- Foyer / Living / Dining / Bedroom

: Superior quality vitrified tile flooring and skirting

: OBD paint for walls and ceiling
- Toilets

: Superior quality ceramic tile flooring

: Superior quality ceramic wall tiling up to false ceiling

: False ceiling with grid panels
- Kitchen

: Superior quality ceramic tile flooring

: Plastic emulsion paint for ceiling
- Balconies / Utilities

: Superior quality ceramic tile flooring and skirting

: MS handrail as per design

: OBD for ceiling
- Staircase

: Granite treads & risers

: MS handrail
- Common Areas

: Granite flooring

: OBD for ceiling
- Joinery

Main Door

: Frame

: Timber

Bedroom Doors

: Architrave

: Timber

Toilet Doors

: Shutters

: with both side Masonite skin

All other external doors to be manufactured in specially designed heavy-duty power coated aluminium extruded frames

Windows / Ventilators

: Power coated aluminium glazed windows made from specially designed and manufactured sections
- Lifts

: Total no. of 6 lifts of reputed make
- Landscape

: Designed landscaping
- Common Facilities

: well-equipped common clubhouse

: Swimming pool
- Electrical

: Concealed copper wiring with modular switch of reputed make



Typical Floor Plan

Basement, Ground+ 8 Floors
2 Level Parking

2 BHK	1085 - 1320 Sft
3 BHK	1430 - 1650 Sft

Note: All Specifications mentioned above are subject to change & decisions taken from time to time by the Developers shall be final and in the brands mentioned above, the Developers may use equivalent brands at their discretion.



01 - 1555 Sft



02 - 1100 Sft



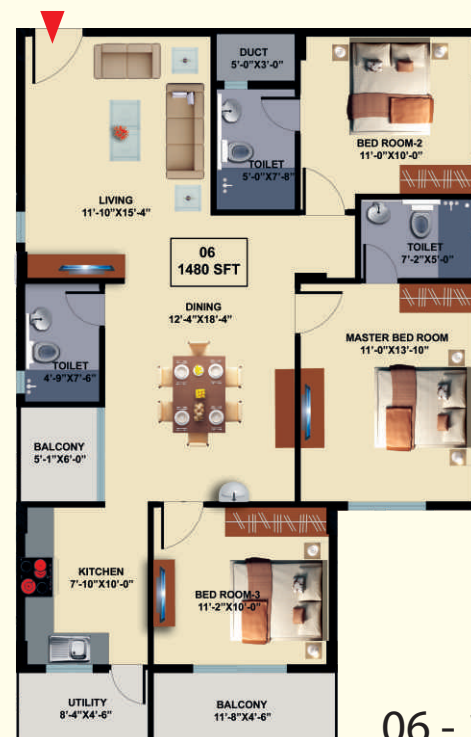
03 - 1520 Sft



04 - 1310 Sft



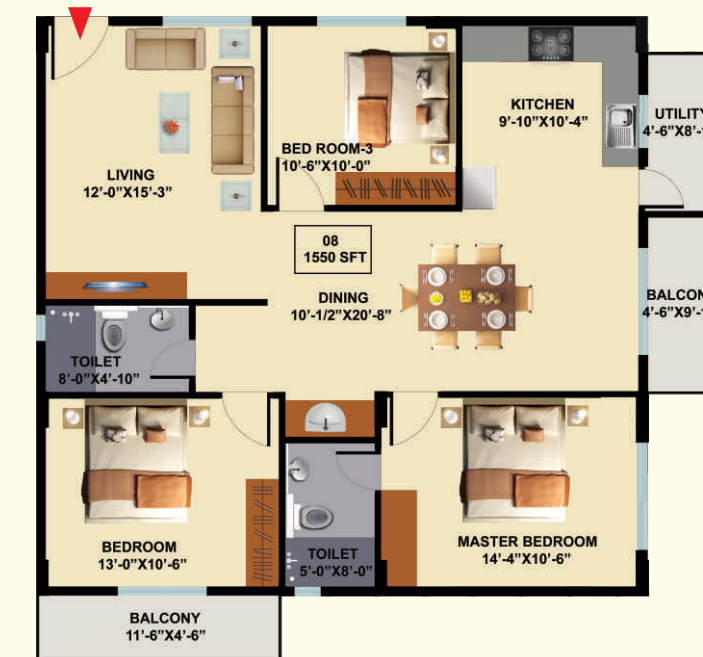
05 - 1430 Sft



06 - 1480 Sft

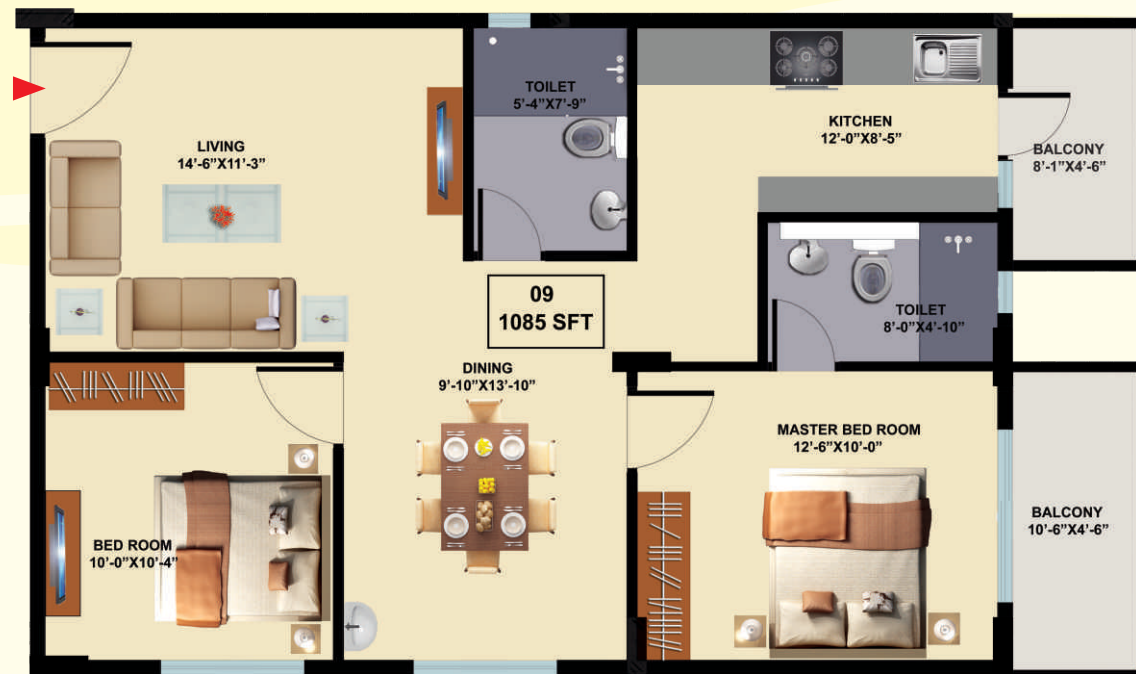


07 - 1305 Sft



08 - 1550 Sft





09 - 1085 Sft



10 - 1635 Sft



11 - 1275 Sft



12 - 1470 Sft



13 - 1650 Sft



14 - 1320 Sft

