

Developers:
Feathers Realty
www.feathers.co.in

"Feathers"
Opp. Sai Sarjan, On 30 mt. Ring Road,
Nr. Sun Pharma Research Center,
Atladara, Vadodara 390 012.
Ph.: +91 265 2960809, Mobile.: +91 94299 28228
Email: feathersrealty@gmail.com

Architects: Dharam Patel
Art & Architecture Associates

Structural Consultants: Ashutosh Desai

Notes: • Life time Maintenance Deposit, Municipal Tax, Service Tax, Electric Connection Deposit & Charges, Documentation Charges, Stamp Duty & other statutory taxes extra as per prevailing rules. • The developers reserve the right to make any addition, alterations & amendments as may be necessitated from time to time in specifications, layout & building plan. • Possession shall be given after one month of the settlement of all accounts. • Extra work shall be carried out after making full payment in advance. • Permission for doing up the interiors shall be given only after the entire work of the developers is completed. • All flat holders shall compulsorily become member of the society/association formed by the flat owners & shall abide by the society by-laws. • This brochure shall not be treated as a legal document; it is only for the purpose of information.



feathers 
an elevated lifestyle



Welcome to Feathers...
Great times are forever!

feathers



an elevated lifestyle



feathers

There is more than the looks

The apartments & penthouses exude a silent charm and a cool confidence, just like their residents to be. No wonder, it was you who was in our mind when we planned it!

Located on the Sun Pharma 30 mtrs. ring road, connecting Old Padra Road, Bhayli-Vasana, Gotri, New Alkapuri, Feathers spells a convenient location with most urban facilities within easy reach.

The opulence of the inner spaces, coupled by the practicability, adds to the grandeur of the outdoors. The living spaces helps create a unique sense of calm to your hurried lives. Built to high technical standards and an eye on the aesthetic & comfort elements, these living spaces leave a lasting impression and sheer satisfaction.





feathers 



Feathers offers uncompromising quality of construction, innovative design and A-list amenities that help create a lifestyle you always yearned for!

A team of committed developers & innovative architects collaborate to create a whole new lifestyle. The team strives to achieve a housing infrastructure that is best-in-the-class!

A M E N I T I E S - In touch with tomorrow

- Aesthetically designed exteriors
- Automatic Elevators of reputed brand
- RO System Point for each apartment
- Common Water Softening Plant
- Stand-by generator for common amenities power back-up
- Fire-fighting System as per Standards of fire safety norms
- Car Parking for each flat & Ample Reserved Parking with Decorative Paving
- Surveillance and monitoring Camera Security System, Efficient communication through Intercom
- Pest Control Treatment in campus and building

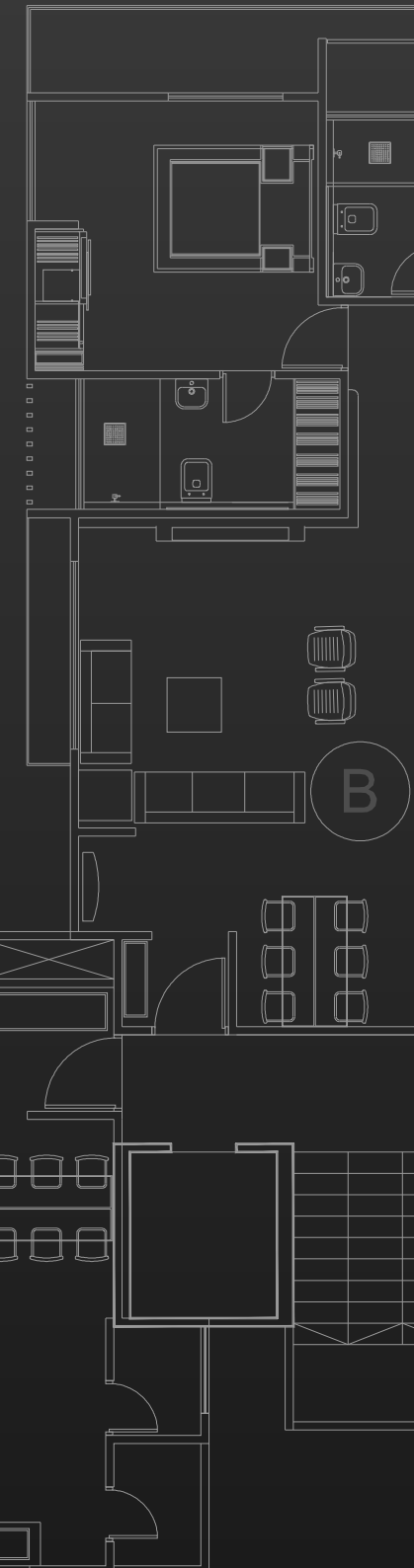
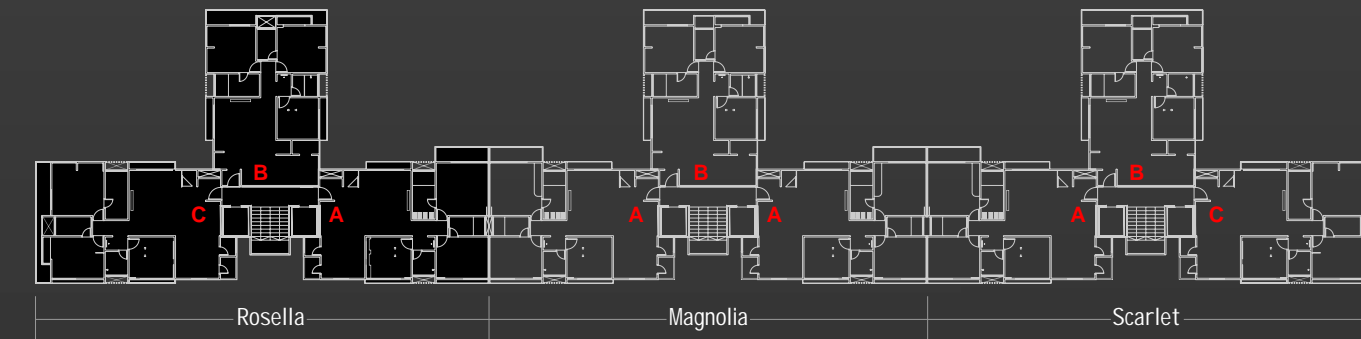


Feathers Club is a hot-bed of all activities & socializing. Be it the blue waters of swimming pool or the cool confined of the Clubhouse. Sit with friends in the lounge or indulge in the myriad indoor games, or take a stroll in the landscaped garden. Refresh, Rejuvenate & Enjoy life to the fullest.

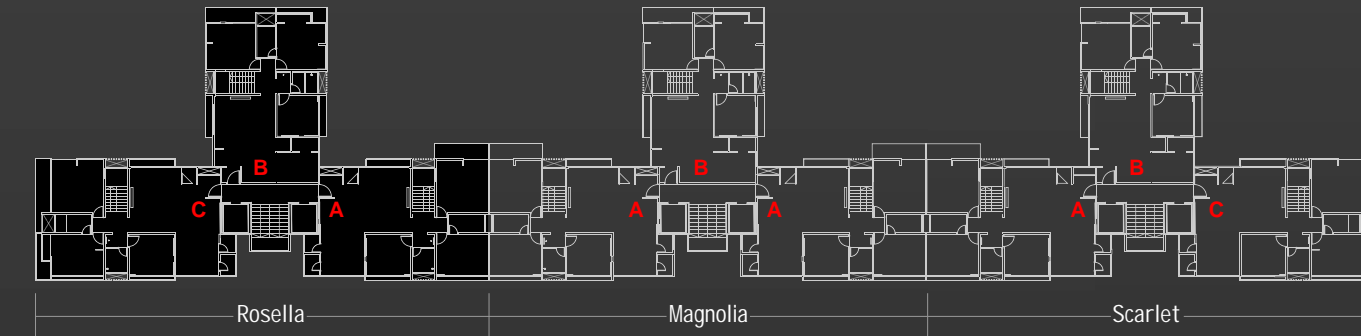
- Swimming Pool
- Gymnasium
- Clubhouse with Lounge & Indoor Games Area
- Landscaped Garden
- Children's Play Area



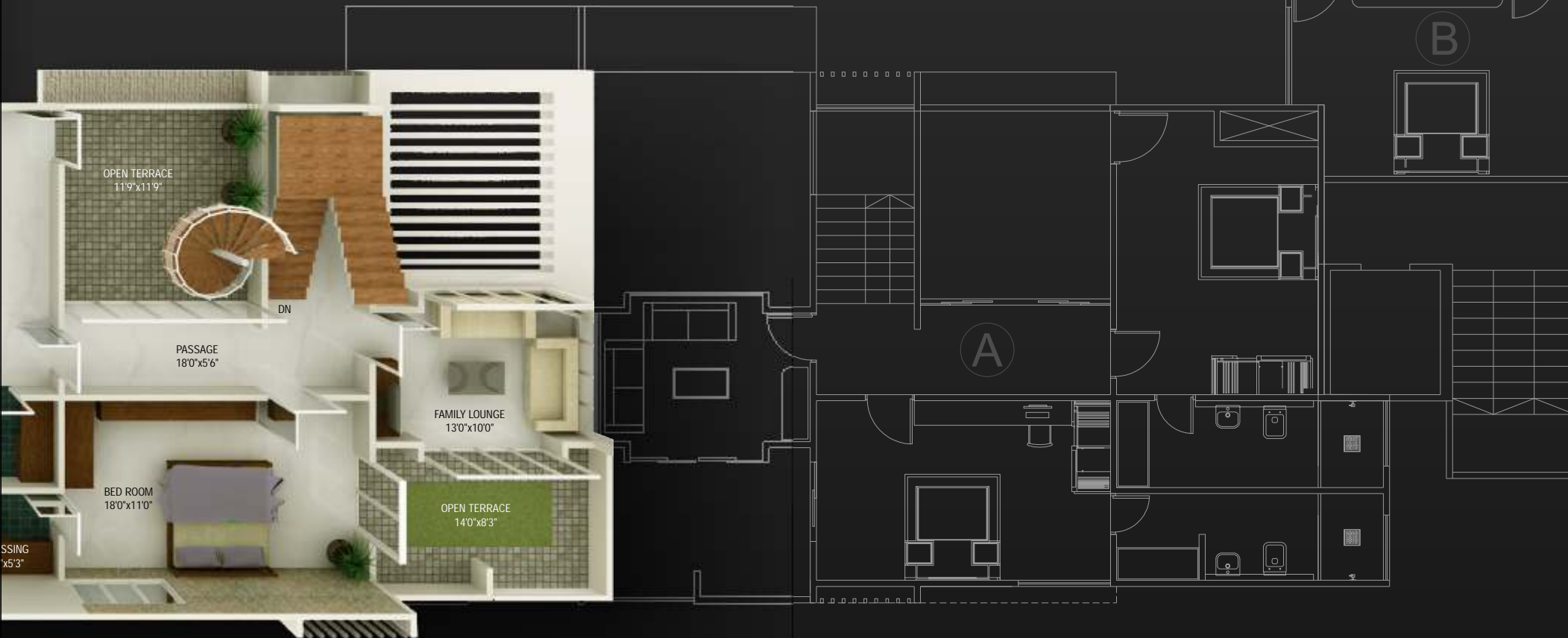
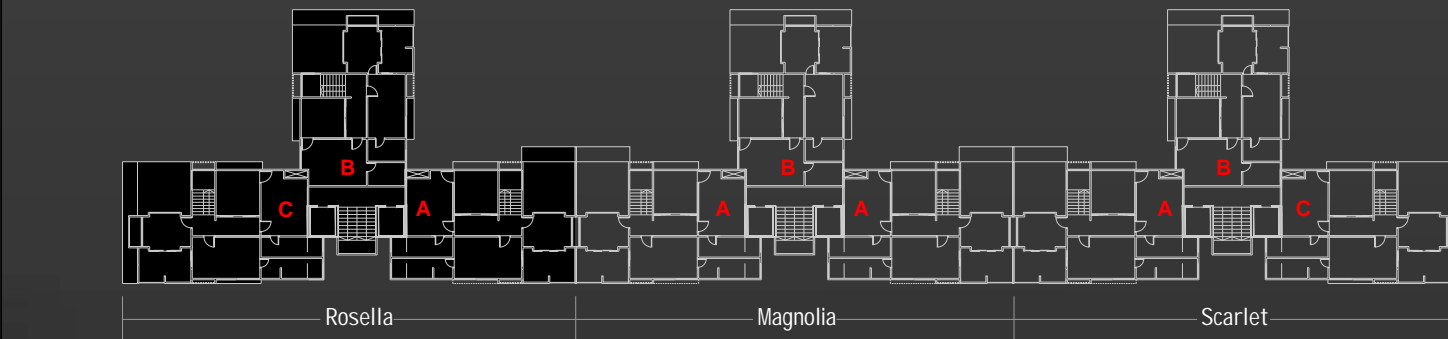
TYPICAL FLOOR PLAN
1st to 8th floor



PENT HOUSE LOWER LEVEL



PENT HOUSE UPPER LEVEL





SPECIFICATIONS

Basic

Structure: Earth Quake Resistant RCC frame structure using superior quality material, as per structural engineer's design

Flooring: Vitrified Flooring in flats, toilets with vitrified/ceramic tiles, Common areas in Vitrified tiles/natural stones, Compound area in RCC Trimix / Paver Blocks

Windows: Colour/ Anodized Aluminium Section Windows

Doors: Elegant Entrance Door with Brass Fittings and Internal Flush Doors with Laminate/Panel

Plumbing: Concealed Plumbing in CPVC with Branded fittings

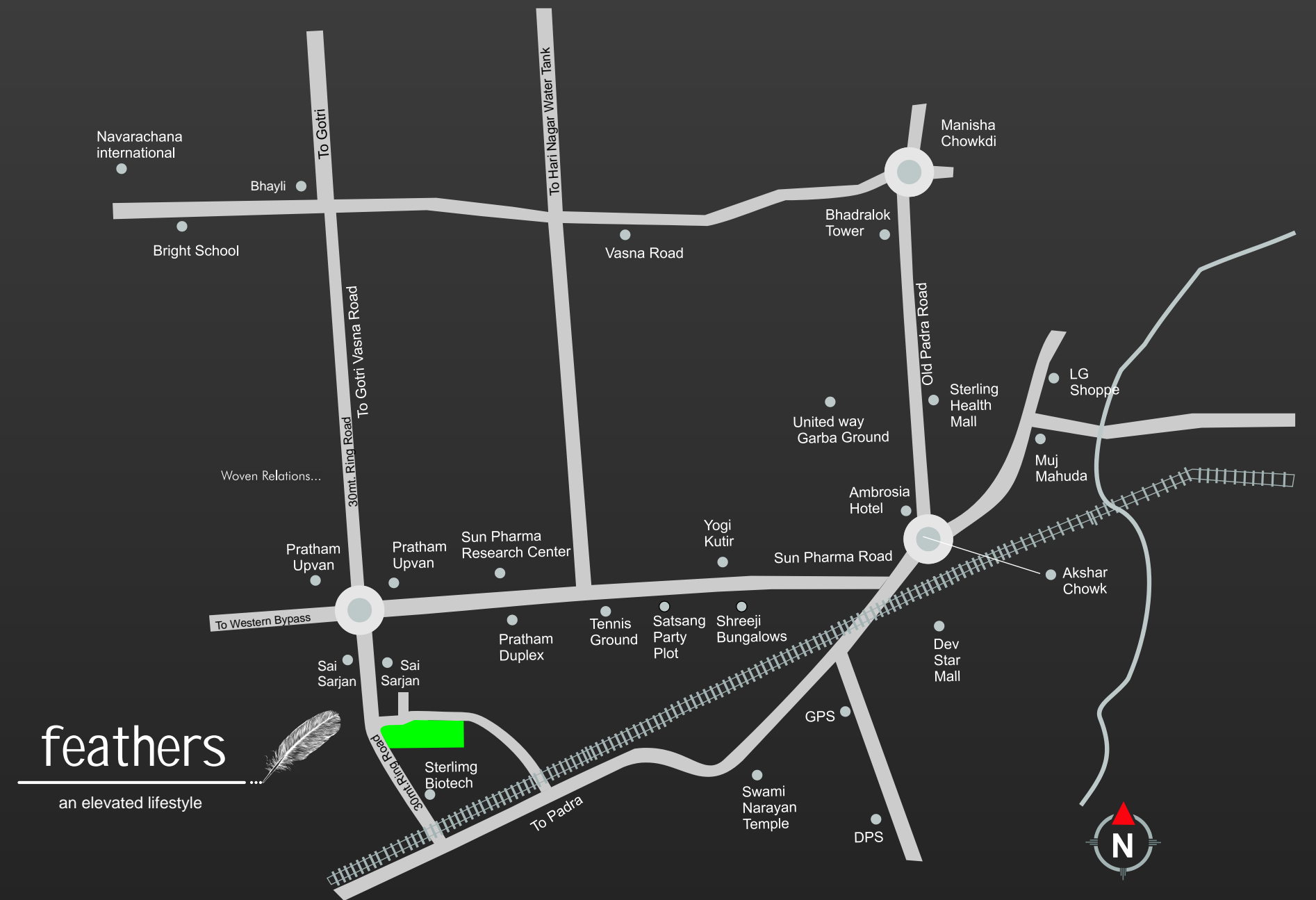
Kitchen: Granite Platform with Sink and Drainboard, Premium Branded Wall Tiles, Glazed tiles below kitchen platform

Toilets: Designer Toilets with Branded Premium Quality Bathroom fittings, Sanitary ware & Glazed tiles

Water Supply: Underground and Overhead Tanks for Sufficient Water Supply with Auto Control Mechanism

Electrification: Concealed Copper wiring with Branded Modular switches, Antenna sockets and Phone jacks. Provision for split A.C. MCB Provision in main distribution board.

Paint: Weather Coat paint in exteriors & Decorative paint in interiors



feathers

an elevated lifestyle

Key Locations (within 3 kms. Radius)

Educational Institutions

ICSE Board: VIBGYOR, Billabong

CBSE Board: Delhi Public School, Bright Day School, Meera School, St. Kabir School

State Board: Gujarat Public School, Bright Day School, Swaminarayan Gurukul, Besil School, Utkarsh Vidyalaya, Shabri School

Institutes: ICFAI National College, Indian Chartered Accountants Institute

Medical

Pramukh Swami Multi Speciality Hospital, Meridian Hospital, Bankers Heart Institute

Temples

Akshar Purushottam Swaminarayan Temple, Rameshwar Temple, ISKCON Temple

Clubs & Restaurants

Relish Resort, Ambrosia, Zaika, Mc Donald's, Satsang Party Plot & Convention

Center, Anand Party Plot

Health & Fitness

Sterling Health Mall, Relish Resort, Talwarkar's Gym, Gold's Gym, Kaya Skin Clinic,

Lakme Skin Care, Jawed Habib Parlour, Mind-Body-Soul Zone, Lawn Tennis

Academy

Retail

Reliance Fresh, D-Mart, Showrooms of General Motors & Ford, Dev Star Mall